

LAUSON
Since 1895
America's Oldest Engine Company

alitec.at

ENGINEERING A NEW
GENERATION OF POWER

136cc
SUMMER ENGINE

7.0
LB-FT TORQUE

4.0
HORSEPOWER

ENDURO XL



EPA



CARB

APPROVED

Lauson Summer Engines deliver the highest torque in their class to drive your application through the toughest conditions - check us out on the web at www.lctusa.com for more details.

Engineered for Severe Summer Conditions

- Excellent value
- Low noise and vibration
- Consistent dependable starting
- Custom color scheme
- Splash lubrication
- Patented design
- Patented oil delivery system
- Internal anti-splash fuel tank baffle
- SAE PTO specifications available
- Remote fuel shut-off
- Pleated paper filter with poly pre filter
- Enhanced cooling technology
- High oil fill available
- Cast iron cylinder
- Viton seals for extended life
- Extra-Life dual ball bearings



Easy Starting



Convenient Controls

- Engine Performance Rating Per SAE J1940

*Electric Start Option is Engine Model Number Specific

1029 S. Jackson Street • PO Box 8468 • Janesville, WI 53547-8468 USA • Tel: (800) 558-5402 • www.LausonPower.com

Supplying to World Class OEM's



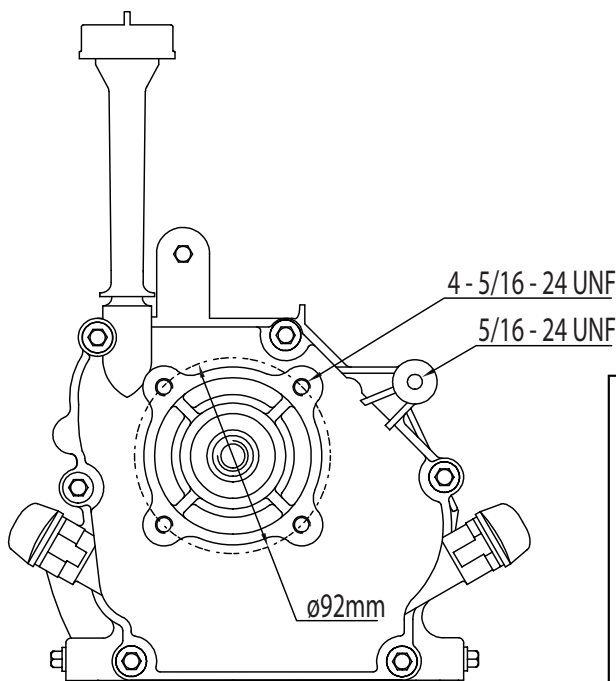
JOHN DEERE



NORTHERN
TOOL + EQUIPMENT
Where Warriors Prepare For Battle

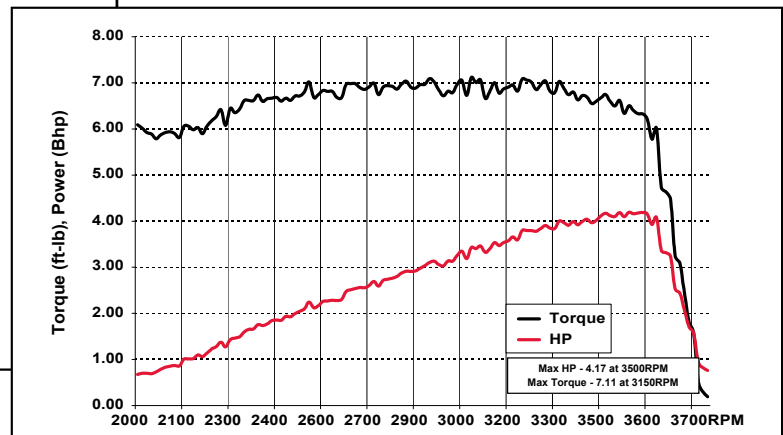
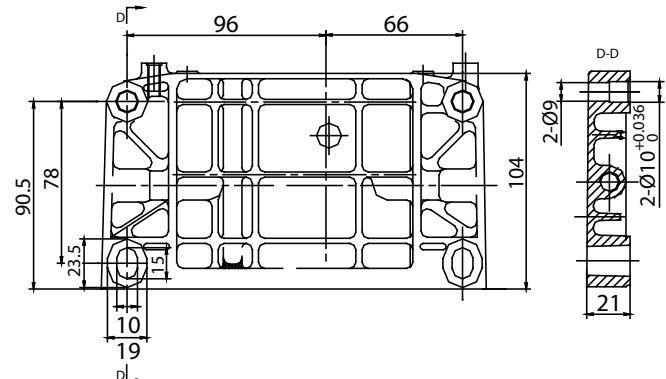


PTO & Mounting Configurations



Full Load Torque Curve

Mounting Foot Specs



Possible Applications

- Generator*
- Compressor
- Blower
- Chipper Shredder
- Tiller
- Trash Pump
- Pressure Sprayer
- Log Splitter
- Snow Thrower**
- Edger
- Concrete Screeds
- Concrete Trowels
- Floor Saws
- Small Construction Equipment
- Vibratory Plate Compactor
- Commercial Turf Equipment

* Special PTO shaft required

**Special controls package required

***Model number dependent

1029 S. Jackson Street • PO Box 8468 • Janesville, WI 53547-8468 USA • Tel: (800) 558-5402 • www.LausonPower.com

LAUSON
Since 1895
America's Oldest Engine Company



LAUSON Engines

136cc Summer

- 136cc Displacement
- 2.44" x 1.77" Bore/Stroke
- Over Head Valve (OHV)
- Cast Iron Sleeve
- Extra-Life Dual Ball Bearings
- Rugged 2.7 qt. Metal Fuel Tank
- Ultra Quiet Muffler
- Dry Weight 31 lbs
- Oil Capacity 16 oz
- Manual Recoil Starter

Part No.	Low Oil Sensor	Air Filter	High Oil-Fill Tube	Speed Control	Crankshaft	Additional Features
913610011		Paper		M	3/4" Dia-3/16" Key, 5/16-24 Tap	49-State, Edger, Tiller
913610051		Paper		M	3/4" Dia-3/16" Key, 5/16-24 Tap	49-State, Tiller

M-manual speed control
F-Fixed speed control

GEN II / TIER III 136CC SNOW ENGINE



Snow King Engines deliver the highest torque in their class to drive your snow thrower through the harshest winter environments - check us out on the web at www.lctusa.com for more details.



ENGINEERING A NEW
GENERATION OF POWER

SNOW KING

Snow King introduces its most refined engine offering to date. OEM tested at sub-zero (<-25°F) environments. Our models receive top reviews by winter equipment rating websites and have been field-proven by consumers.

Winter Engineered® for Snow Blowing Equipment:

- Patented snow engine design
- Most power in its class
- Adheres to relevant ANSI safety standards
- Convenient controls for use with gloves
- Fuel shutoff valve comes standard
- Internal fuel tank debris filter
- Oversized audible stop fuel cap
- 3X Primer bulb system
- Safety key switch
- Oversized Mitten Grip recoil handle
- 30 Year proven recoil design
- Extra-Life dual ball bearings
- Snow melt run-off channels
- Consumer upgradeable electric start offering
- Extended oil drain
- CE compliant available
- US EPA Tier III / CARB / EU emission compliant

Note: Electric start and alternator engine model specific

LAUSON
Since 1895
America's Oldest Engine Company

1029 S. Jackson Street • PO Box 8468 • Janesville, WI 53547-8468 USA • Tel: (800) 558-5402 • www.LausonPower.com



**Single-
Stage**



GEN II

Snow King 136cc Winter

- 136cc Displacement
- 2.44" x 1.77" Bore/Stroke
- Over Head Valve (OHV)
- Cast Iron Sleeve
- Extra-Life Dual Ball Bearings
- Ultra Quiet Muffler
- Dry Weight 38 lbs
- Oil Capacity 16 oz
- Fixed-speed
- Manual Recoil Starter

Part No.	Electric Starter	Application	Design Generation	Additional Features	Additional Features
913670011	X	Single-Stage	Single-Stage	3/4" Dia-3/16" Key, 5/16-24 Tap	NO FUEL TANK
913670021	X	2-Stage	GEN II	3/4" Dia-3/16" Key, 5/16-24 Tap	2.7 Liter Fuel Tank

208cc
SUMMER ENGINE

9.5
LB-FT TORQUE

6.5
HORSEPOWER

ENDURO XL



EPA



CARB

APPROVED

Lauson Enduro XL Engines deliver the highest torque in their class to drive your application through the toughest conditions - check us out on the web at www.lctusa.com for more details.

Engineered for Severe Summer Conditions

- Excellent value
- Low noise and vibration
- Consistent dependable starting
- Custom color scheme
- Splash lubrication
- Patented design
- Patented oil delivery system
- Internal anti-splash fuel tank baffle
- SAE PTO specifications available
- Remote fuel shut-off
- Pleated paper filter with poly pre filter
- Enhanced cooling technology
- High oil fill available
- Cast iron cylinder
- Viton seals for extended life
- Extra-Life dual ball bearings



Easy Starting



Convenient Controls

- Engine Performance Rating Per SAE J1940

*Electric Start Option is Engine Model Number Specific

Supplying to World Class OEM's



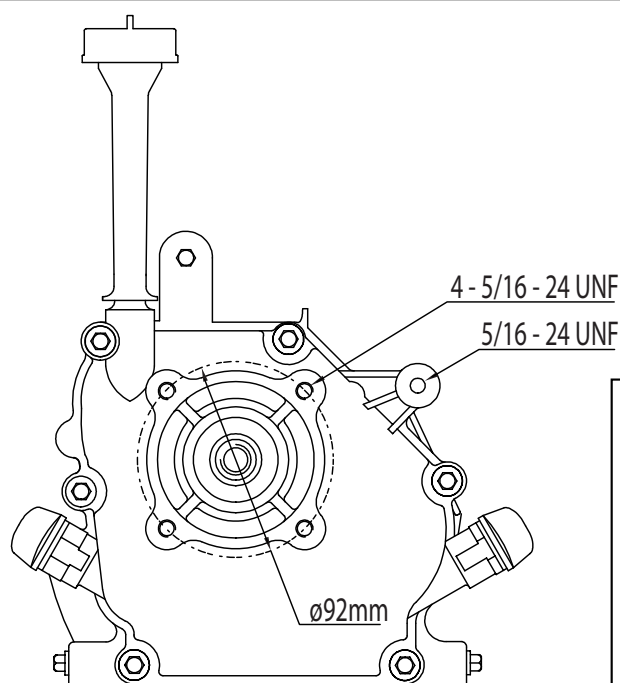
JOHN DEERE



NORTHERN
TOOL + EQUIPMENT
Where Warriors Prepare For Battle

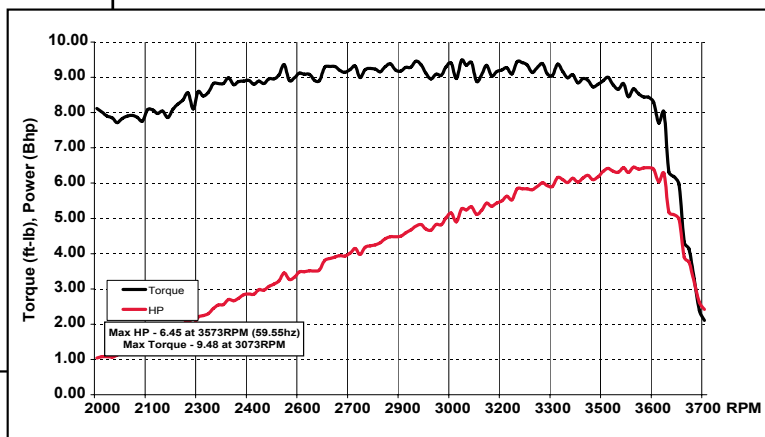
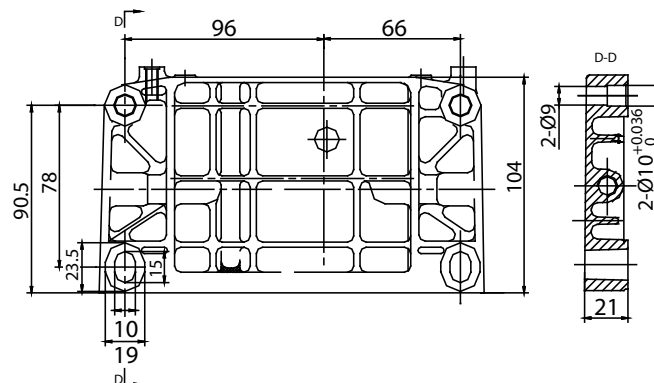


PTO & Mounting Configurations



Full Load Torque Curve

Mounting Foot Specs



Possible Applications

- Generator*
- Compressor
- Blower
- Chipper Shredder
- Tiller
- Trash Pump
- Pressure Sprayer
- Log Splitter
- Snow Thrower**
- Edger
- Concrete Screeds
- Concrete Trowels
- Floor Saws
- Small Construction Equipment
- Vibratory Plate Compactor
- Commercial Turf Equipment

* Special PTO shaft required

** Special controls package required

*** Model number dependent

1029 S. Jackson Street • PO Box 8468 • Janesville, WI 53547-8468 USA • Tel: (800) 558-5402 • www.LausonPower.com

LAUSON
Since 1895
America's Oldest Engine Company



208cc Summer

- 208cc Displacement
- 8.5 ft-lbs Gross Torque
- Over Head Valve (OHV)
- Cast Iron Sleeve
- Extra-Life Dual Ball Bearings
- Rugged 2.7 qt. Metal Fuel Tank
- Ultra Quiet Muffler
- Dry Weight 35 lbs
- Oil Capacity 16 oz
- Manual Recoil Starter

Part No.	Low Oil Sensor	Air Filter	High Oil-Fill Tube	Speed Control	Crankshaft	Additional Features
920810011		Paper		M	3/4" Dia-3/16" Key, 5/16-24 Tap	49-State, Tiller, EU Compliant Muffler
920810031		Paper	X	M	3/4" Dia-3/16" Key, 5/16-24 Tap	49-State, 2-low oil fills
920810071	X	Foam		M	3/4" Dia-3/16" Key, 5/16-24 Tap	49-State, 2-low oil fills, Blue Paint (NTE)
920810101	X	Generator		F	Tapered	49-State, 2-low oil fills, NO FUEL TANK
920810121	X	Paper	X	M	3/4" Dia-3/16" Key, 5/16-24 Tap	49-State, 2-low oil fills
920810131	X	Paper	X	M	1" Dia-1/4" Keyed, 3/8-24 Tap	49-State, 2-low oil fills
920810141		Paper		M	3/4" Dia-3/16" Key, 5/16-24 Tap	50-State, Tiller, EU Compliant Muffler

M-manual speed control
F-Fixed speed control

GEN II / TIER III 208CC SNOW ENGINE



Snow King Engines deliver the highest torque in their class to drive your snow thrower through the harshest winter environments - check us out on the web at www.lctusa.com for more details.



ENGINEERING A NEW
GENERATION OF POWER

SNOW KING®

Snow King introduces its most refined engine offering to date. OEM tested at sub-zero (<-25°F) environments, our models receive top reviews by winter equipment rating websites and have been field-proven by consumers.

Winter Engineered® for Snow Blowing Equipment:

- Patented snow engine design
- Most power in its class
- Adheres to relevant ANSI safety standards
- Convenient controls for use with gloves
- Fuel shutoff valve comes standard
- Internal fuel tank debris filter
- Oversized audible stop fuel cap
- 3X Primer bulb system
- Safety key switch
- Oversized Mitten Grip recoil handle
- 30 Year proven recoil design
- Extra-Life dual ball bearings
- Snow melt run-off channels
- Consumer upgradeable electric start offering
- Extended oil drain
- CE compliant available
- US EPA Tier III / CARB / EU emission compliant

Note: Electric start and alternator engine model specific

LAUSON
Since 1895
Americas Oldest Engine Company

1029 S. Jackson Street • PO Box 8468 • Janesville, WI 53547-8468 USA • Tel: (800) 558-5402 • www.LausonPower.com



GEN I



GEN II



**Single-
Stage**

Snow King 208cc Winter

- 208cc Displacement
- 9.5 ft-lbs Gross Torque
- Over Head Valve (OHV)
- Engineered for Sub-Zero Operations
- Primer Bulb Cold Weather Starting
- Oversize Recoil Handle and Controls
- Cast Iron Sleeve
- Extra-Life Dual Ball Bearings
- Rugged 2.7 qt. Metal Fuel Tank
- Ultra Quiet Muffler
- Dry Weight 38 lbs
- Oil Capacity 16 oz
- Manual Recoil Starter
- High Oil-Fill Tube with Dipstick
- Fixed-Speed
- Crankshaft = 3/4" Dia-1/4" Keyway 3/8-24 Tap

Part No.	Electric Starter	Application	Design Generation	Additional Features
920870011		Single-Stage	Single-Stage	No Fuel Tank
920870021		Single-Stage	Single-Stage	Europe, CE Compliant, No Fuel Tank
920870031	X	Single-Stage	Single-Stage	No Fuel Tank
920870041	X (230V)	Single-Stage	Single-Stage	Europe, No Fuel Tank
920870051		2-Stage	GEN I	
920870091	X	2-Stage	GEN I	
920870101	X (230V)	2-Stage	GEN II	Europe, CE Compliant
920870111	X	2-Stage	GEN II	DC Lighting coil
920870121	X	2-Stage	GEN II	60-Watt AC Alternator
920870131		2-Stage	GEN I	Recoil Only
920870141	X	2-Stage	GEN I	

LAUSON
Since 1895
Americas Oldest Engine Company

ENDURO XL



ENGINEERING A NEW
GENERATION OF POWER

Horizontal Shaft Engine

291cc
SUMMER ENGINE

12.0
LB-FT TORQUE

8.0
HORSEPOWER



Engineered for Severe Summer Conditions

- Excellent value
- Low noise and vibration
- Consistent dependable starting
- Custom color scheme
- Splash lubrication
- Patented design
- Patented oil delivery system
- Internal anti-splash fuel tank baffle
- SAE PTO specifications available
- Remote fuel shut-off
- Pleated paper filter with poly pre filter
- Enhanced cooling technology
- High oil fill available
- Cast iron cylinder
- Viton seals for extended life
- Extra-Life dual ball bearings



Easy Starting



Convenient Controls

- Engine Performance Rating Per SAE J1940

*Electric Start Option is Engine Model Number Specific

291 Series Specifications

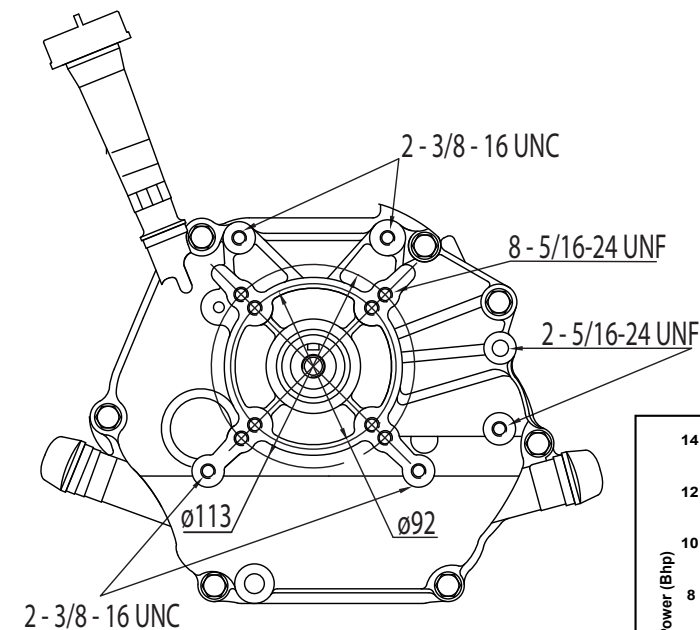
Item	Specification
Maximum Rated Speed	3850±150 RPM
Compression Ratio	8.2:1
Displacement	291cc
Bore	80mm
Stroke	58mm
Cast Iron Sleeve	Yes
Fuel	Gasoline
Compression Release	Yes
Dry Weight	26kg / 57lb
Low Oil Shut Off	Yes
Fuel Valve Shut Off	Yes

LAUSON
Since 1895
America's Oldest Engine Company

291 Series

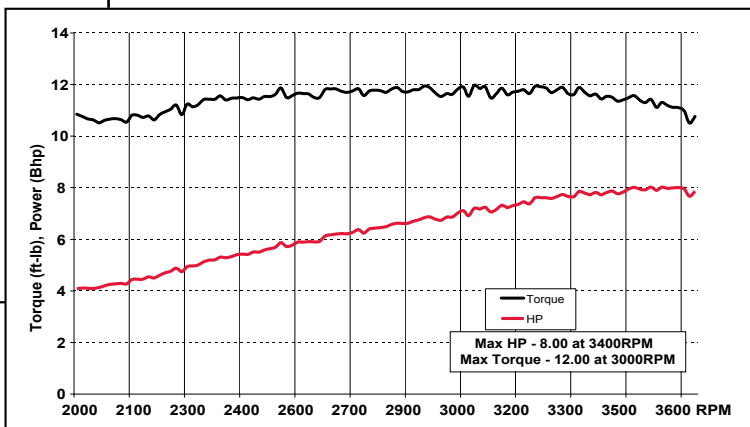
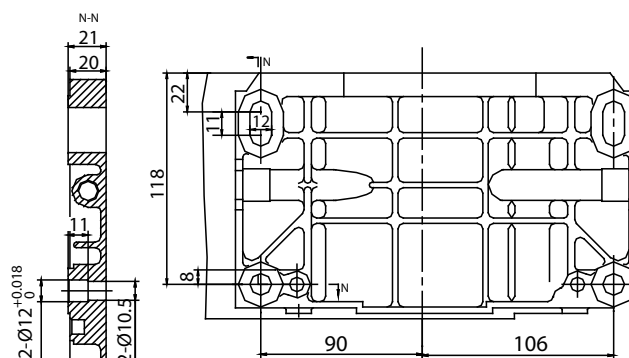
The Enduro XL Advantage
The perfect choice for replacement engines.

PTO & Mounting Configurations



Full Load Torque Curve

Mounting Foot Specs



Possible Applications

- Generator
- Compressor
- Blower
- Chipper shredder
- Tiller
- Trash pump
- Pressure sprayer
- Log splitter
- Commercial turf equipment
- Off road vehicle

1029 S. Jackson Street • PO Box 8468 • Janesville, WI 53547-8468 USA • Tel: (800) 558-5402 • www.LausonPower.com

LAUSON
Since 1895
America's Oldest Engine Company



LAUSON

Engines

291cc Summer

- 291cc Displacement
- 13 ft-lbs Gross Torque
- Over Head Valve (OHV)
- Cast Iron Sleeve
- Extra-Life Dual Ball Bearings
- Rugged 2.7 qt. Metal Fuel Tank
- Ultra Quiet Muffler
- Dry Weight 57.3 lbs
- Oil Capacity 32 oz
- Manual Recoil Starter
- Crankshaft = 1" Dia - 1/4" Keyway
3/8-24 Tap

Part No.	Low Oil Sensor	Air Filter	High Oil-Fill Tube	Speed Control	Additional Features
929110011	X	Paper	X	M	49-State, Recoil Start Only, 2 low-oil fills
929110021	X	Paper	X	M	49-State, Electric-Start, AC charging coil, 2 low-oil fills

M-manual speed control
F-Fixed speed control

GEN II / TIER III 291CC SNOW ENGINE



Snow King Engines deliver the highest torque in their class to drive your snow thrower through the harshest winter environments - check us out on the web at www.lctusa.com for more details.



EPA Approved

CARB Approved
Model number dependent

ENGINEERING A NEW
GENERATION OF POWER

SNOW KING®

Snow King introduces its most refined engine offering to date. OEM tested at sub-zero (<-25°F) environments, our models receive top reviews by winter equipment rating websites and have been field-proven by consumers.

Winter Engineered® for Snow Blowing Equipment:

- Patented snow engine design
- Most power in its class
- Adheres to relevant ANSI safety standards
- Convenient controls for use with gloves
- Fuel shutoff valve comes standard
- Internal fuel tank debris filter
- Oversized audible stop fuel cap
- 3X Primer bulb system
- Safety key switch
- Oversized Mitten Grip recoil handle
- Industrial strength recoil design
- Extra-Life dual ball bearings
- Snow melt run-off channels
- Consumer upgradeable electric start offering
- Extended oil drain
- CE compliant available
- US EPA Tier III / CARB / EU emission compliant

Note: Electric start and alternator engine model specific

LAUSON
Since 1895
America's Oldest Engine Company

1029 S. Jackson Street • PO Box 8468 • Janesville, WI 53547-8468 USA • Tel: (800) 558-5402 • www.LausonPower.com



LAUSON
Engines

Snow King 291cc Winter

- 291cc Displacement
- 14.5 ft-lbs Gross Torque
- Engineered for Sub-Zero Operation
- Primer Bulb Cold Weather Starting
- Oversize Recoil Handle and Controls
- Over Head Valve (OHV)
- Cast Iron Sleeve
- Extra-Life Dual Ball Bearings
- Rugged 2.7 qt. Metal Fuel Tank
- Ultra Quiet Muffler
- Dry Weight 61.5 lbs
- Oil Capacity 32 oz
- Manual Recoil Starter

Part No.	Electric Start	Application	High Oil-Fill Tube	Crankshaft	Additional Features
929170011	X	2-Stage	X	1" Dia-1/4" Key, 3/8-24 Tap	50-State, AC/DC Charging Coil, 2 low-oil fills
929170021	X (220V)	2-Stage	X	1" Dia-1/4" Key, 3/8-24 Tap	Europe, AC/DC Charging Coil, 2 low-oil fills

LAUSON
Since 1895
Americas Oldest Engine Company

ENDURO XL

alitec.at

ENGINEERING A NEW
GENERATION OF POWER

Horizontal Shaft Engine

414cc
SUMMER ENGINE

16.5
LB-FT TORQUE

11.5
HORSEPOWER



Engineered for Severe Summer Conditions

- Excellent value
- Low noise and vibration
- Consistent dependable starting
- Custom color scheme
- Splash lubrication
- Patented design
- Patented oil delivery system
- Internal anti-splash fuel tank baffle
- SAE PTO specifications available
- Remote fuel shut-off
- Pleated paper filter with poly pre filter
- Enhanced cooling technology
- High oil fill available
- Cast iron cylinder
- Viton seals for extended life
- Extra-Life dual ball bearings



Easy Starting



Convenient Controls

- Engine Performance Rating Per SAE J1940

*Electric Start Option is Engine Model Number Specific

1029 S. Jackson Street • PO Box 8468 • Janesville, WI 53547-8468 USA • Tel: (800) 558-5402 • www.LausonPower.com

414 Series Specifications

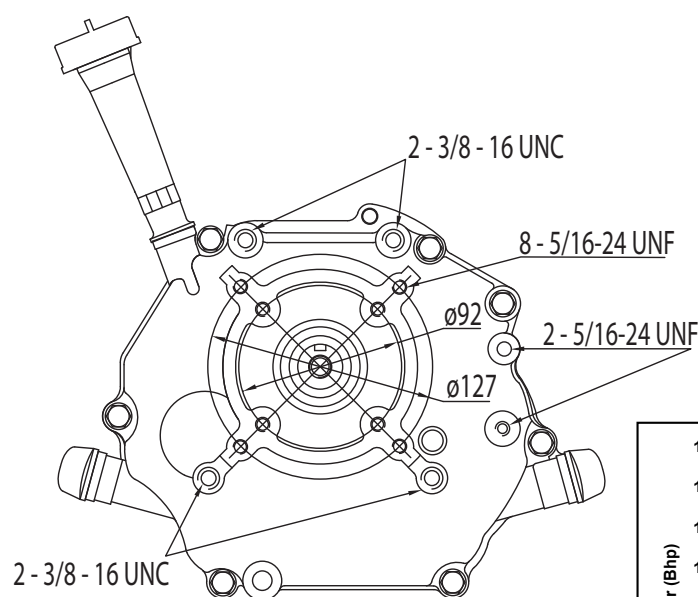
Item	Specification
Maximum Rated Speed	3850±150 RPM
Compression Ratio	8:1
Displacement	414cc
Bore	90mm
Stroke	64mm
Cast Iron Sleeve	Yes
Fuel	Gasoline
Compression Release	Yes
Dry Weight	31kg / 69lb
Low Oil Shut Off	Yes
Fuel Valve Shut Off	Yes

LAUSON
Since 1895
America's Oldest Engine Company

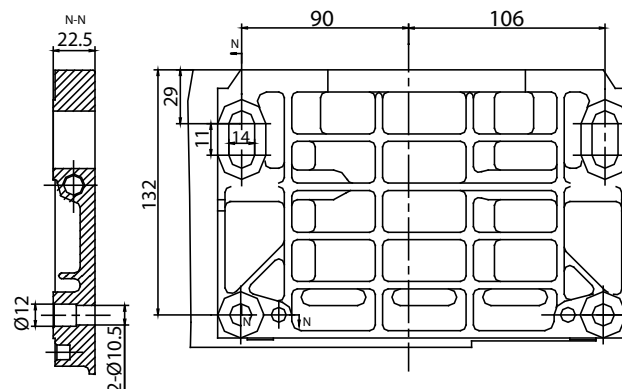
414 Series

The Enduro XL Advantage
The perfect choice for replacement engines.

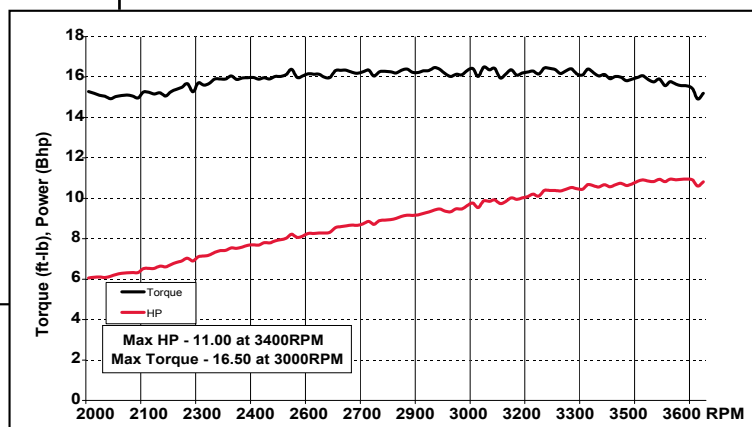
PTO & Mounting Configurations



Mounting Foot Specs



Full Load Torque Curve



Possible Applications

- Generator
- Compressor
- Blower
- Chipper shredder
- Tiller
- Trash pump
- Pressure sprayer
- Log splitter
- Commercial turf equipment
- Off road vehicle

1029 S. Jackson Street • PO Box 8468 • Janesville, WI 53547-8468 USA • Tel: (800) 558-5402 • www.LausonPower.com

LAUSON
Since 1895
America's Oldest Engine Company



414cc Summer

- 414cc Displacement
- 18 ft-lbs Gross Torque
- Over Head Valve (OHV)
- Cast Iron Sleeve
- Extra-Life Dual Ball Bearings
- Rugged 2.7 qt. Metal Fuel Tank
- Ultra Quiet Muffler
- Dry Weight 69.5 lbs
- Oil Capacity 38 oz
- Manual Recoil Starter



Part No.	Low Oil Sensor	Air Filter	High Oil-Fill Tube	Speed Control	Crankshaft	Additional Features
941410011	X	Paper	X	M	1" Dia-1/4" Key, 3/8-24 Tap	49-State, Recoil Start Only, 2 low-oil fills
941410021	X	Paper	X	M	1" Dia-1/4" Key, 3/8-24 Tap	49-State, Electric-Start, AC charging coil, 2 low-oil fills
941410031	X	Paper	X	F	Tapered	NO FUEL TANK, Generator Application
941410041	X	Paper		M	1" Dia-1/4" Key, 3/8-24 Tap	49-State, Recoil Start Only, 2-low-oil fills, Large Commercial Fuel Tank, Blue Paint (NTE)
941410051	X	Paper		M	1" Dia-1/4" Key, 3/8-24 Tap	49-State, Recoil Start Only, 2-low-oil fills

M-manual speed control
F-Fixed speed control

GEN II / TIER III 414CC SNOW ENGINE



Snow King Engines deliver the highest torque in their class to drive your snow thrower through the harshest winter environments - check us out on the web at www.lctusa.com for more details.



ENGINEERING A NEW
GENERATION OF POWER

SNOW KING

Snow King introduces its most refined engine offering to date. OEM tested at sub-zero (<-25°F) environments, our models receive top reviews by winter equipment rating websites and have been field-proven by consumers.

Winter Engineered® for Snow Blowing Equipment:

- Patented snow engine design
- Most power in its class
- Adheres to relevant ANSI safety standards
- Convenient controls for use with gloves
- Fuel shutoff valve comes standard
- Internal fuel tank debris filter
- Oversized audible stop fuel cap
- 3X Primer bulb system
- Safety key switch
- Oversized Mitten Grip recoil handle
- Industrial strength recoil design
- Extra-Life dual ball bearings
- Snow melt run-off channels
- Consumer upgradeable electric start offering
- Extended oil drain
- CE compliant available
- US EPA Tier III / CARB / EU emission compliant

Note: Electric start and alternator engine model specific

LAUSON
Since 1895
Americas Oldest Engine Company

1029 S. Jackson Street • PO Box 8468 • Janesville, WI 53547-8468 USA • Tel: (800) 558-5402 • www.LausonPower.com



LAUSON
Engines

Snow King 414cc Winter

- 414cc Displacement
- 18.5 ft-lbs Gross Torque
- Engineered for Sub-Zero Operation
- Primer Bulb Cold Weather Starting
- Oversize Recoil Handle and Controls
- Over Head Valve (OHV)
- Cast Iron Sleeve
- Extra-Life Dual Ball Bearings
- Rugged 2.7 qt. Metal Fuel Tank
- Ultra Quiet Muffler
- Dry Weight 75.5 lbs
- Oil Capacity 38 oz
- Manual Recoil Starter

Part No.	Electric Start	Application	High Oil-Fill Tube	Crankshaft	Additional Features
941470011	X	2-Stage	X	1" Dia-1/4" Key, 3/8-24 Tap	50-State, AC/DC Charging Coil, 2 low-oil fills
941470031	X	2-Stagw	X	1" Dia-1/4" Key, 3/8-24 Tap	50-State, AC/DC Charging Coil